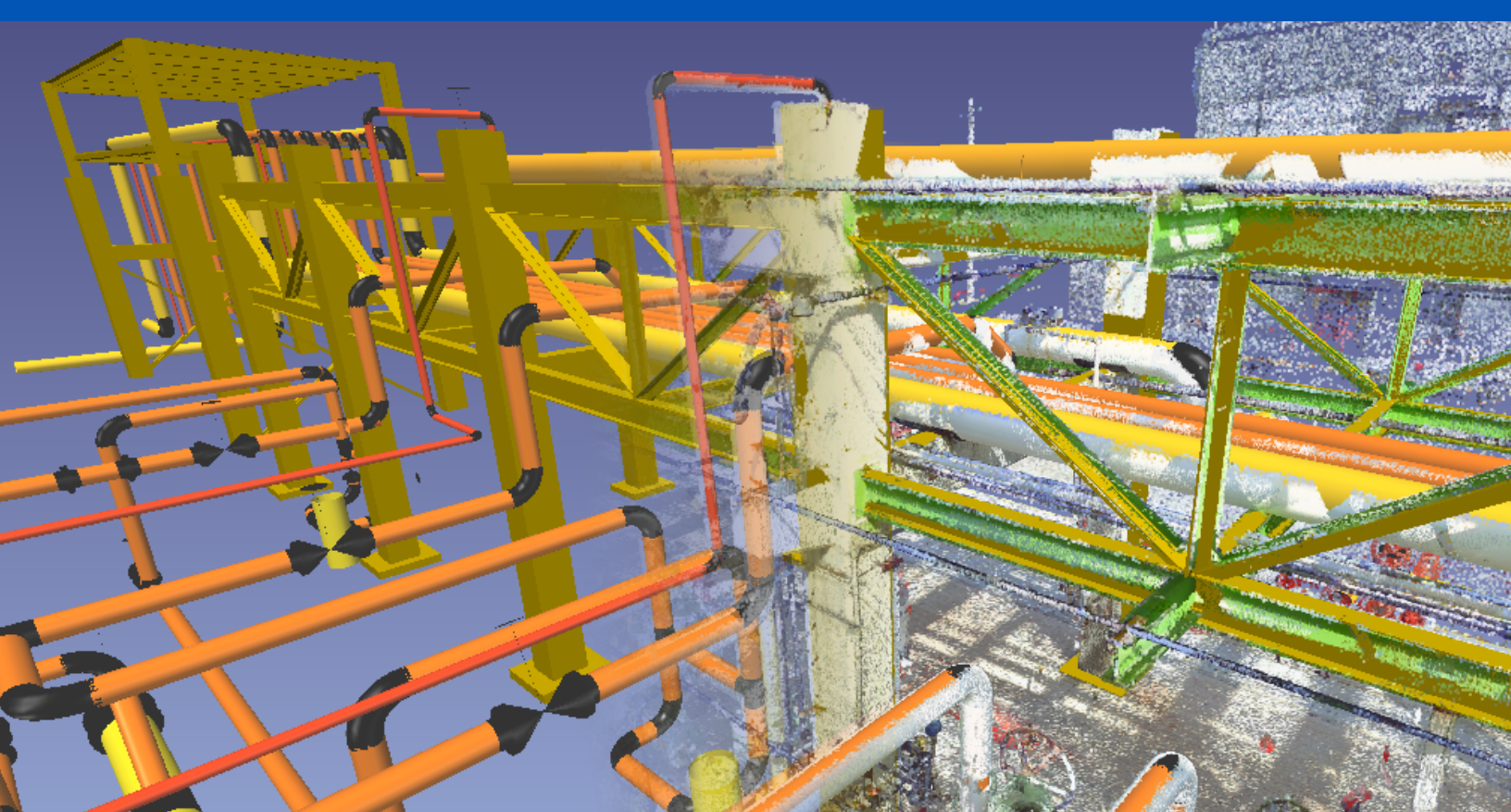




Field To Finish, Faster Than Ever Before



Significantly Reduce As-Built Modeling Time



Ensure Accuracy with Robust QA/QC Tools



Complete Downstream Design Work Faster



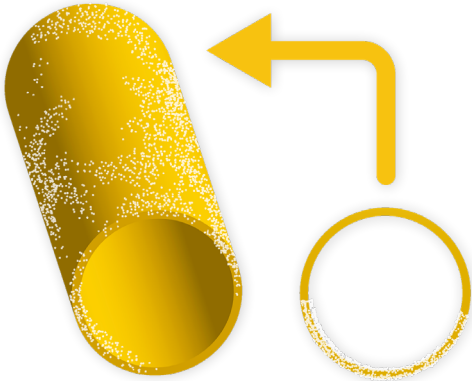
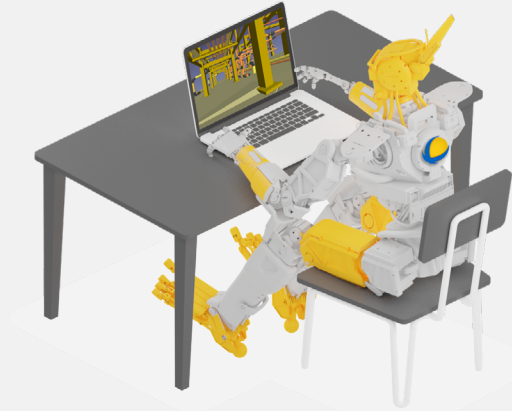
Integrated with Revit & Other Design Software

EdgeWise is an as-built modeling platform that uses advanced algorithms to automate tedious scan-to-BIM workflows. It models as-built pipes, structural elements, ducts, walls, and conduit from mobile and terrestrial point clouds significantly faster than traditional manual modeling techniques—all while improving the accuracy of the model.

How can EdgeWise help your next project?

Reduce Tedious Manual Modeling

The advanced computer vision algorithms and pattern matching technologies extract features automatically, eliminating the tedious parts of modeling and empowering you to focus on the critical project deliverables.

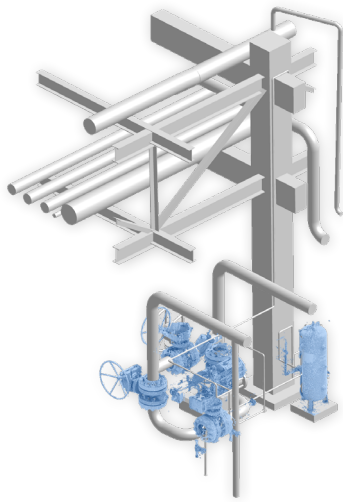


Deliver More Accurate As-Built

EdgeWise fits elements to the point cloud precisely and offers advanced QA tools for verifying the accuracy of the fit. Resize and adjust any poorly fitted objects to the points easily and take total control over the final accuracy of your model.



» TALK TO ONE OF OUR EXPERTS



Complete Downstream Design Work Faster

EdgeWise's unique point cloud export options enable you to accelerate your downstream design work. Using "Remainder Cloud," you can export points of objects not modeled in EdgeWise, like machinery. With "Smart Points," you can easily isolate points belonging to modeled objects you want to modify downstream.

Move Models into Revit, PDMS, Plant3D and more

EdgeWise is fully integrated with all major design platforms, allowing you to bring intelligent models and families into Revit, PDMS and more.



“



“The modeling of MEP and structure in EdgeWise took 25 hours, which was a time savings of about 40 hours. It was really a success.”

Mark Hanna, CEO & Founder, PrecisionPoint, Inc.

”

CLEAREDGE^{3D}

≡ TALK TO ONE OF OUR EXPERTS ≡

sales@clearedge3d.com | USA: + 1 866-944-8210 | clearedge3d.com