

# GTL-1000

## Layout and Laser Scanning Tool for Same Day Verification



Layout and Scan in a  
Single Set-up



A Total Station and  
Scanner in One



Reduce Equipment  
Expense



Reduce Construction  
Mistakes

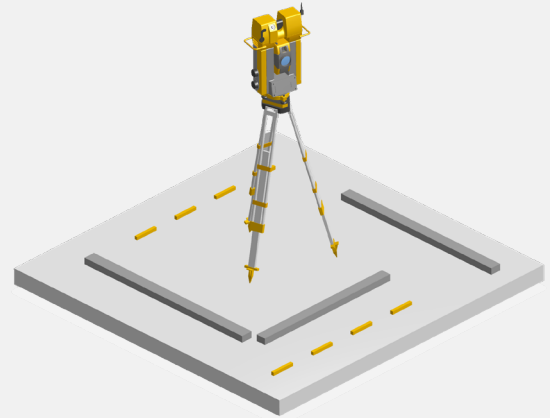
The GTL-1000 combines the power of a robotic total station and a best-in-class laser scanner. It performs digital layout and captures high-res 3D scans in a single setup, giving you the accurate as-built data you need for advanced construction QA workflows.

# How can GTL-1000 help your next project?

---

## Reduce On-Site & Redesign Costs

Using one instrument for layout and laser scanning eliminates expenses associated with training, equipment maintenance, and larger on-site crews. Getting the 3D as-built data you need to perform construction QA/QC means you can correct errors before they become costly problems.

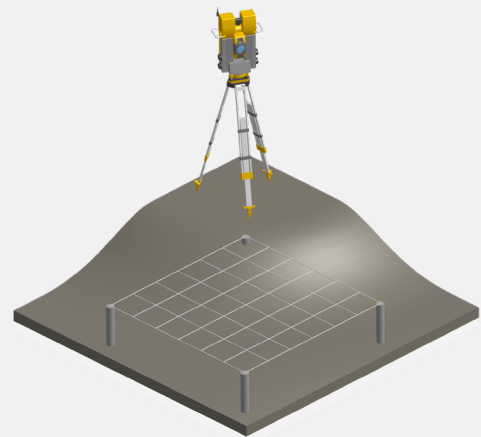


## Reduce Software Processing Time by 50%

GTL-1000 produces fully registered and on-control point clouds, eliminating tedious and complex registration workflows. Its user-adjustable scan density feature reduces processing time so you get a significant head start on your 3D workflows.

## Streamline Digital Layout Workflows

Long-range reflectorless measurements and smooth prism-tracking technology enable you to work faster in challenging construction environments and deliver projects on time—without sacrificing quality.



» TALK TO ONE OF OUR EXPERTS

# How Does It Work?

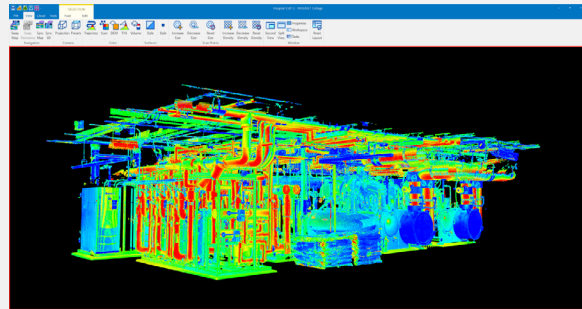
## 1 Layout / Scan

GTL-1000  
Robotic Scanning Total Station



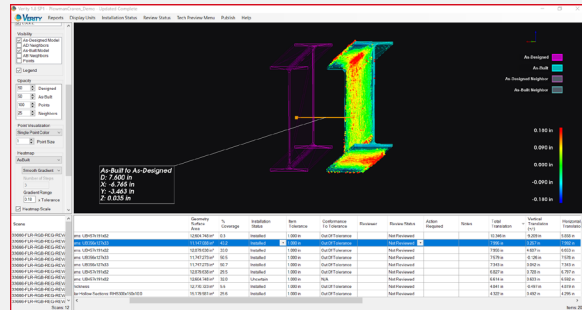
## 2 Process

MAGNET  
Collage and Collage Web



## 3 Verify

Verity for Autodesk®  
Navisworks®



**CLEAREDGE<sup>3D</sup>**

≡ TALK TO ONE OF OUR EXPERTS ≡

[sales@clearedge3d.com](mailto:sales@clearedge3d.com) | USA: + 1 866-944-8210 | [clearedge3d.com](http://clearedge3d.com)